



## Instructions

**Pattern:** 10 sheets **Assembly Instructions:** 2 sheets **Number of Parts:** 11; and 56 for the ornaments

- - - - - Mountain fold    - · - · - · Valley fold    ——— Scissors line  
 Cut out    ● Glue tab

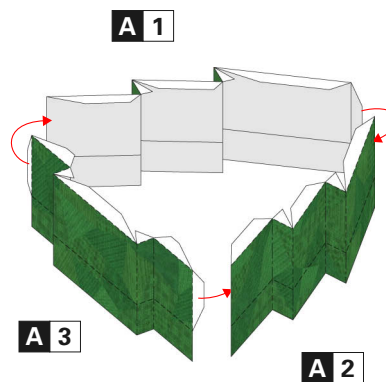
**You will need:** Scissors, glue, ruler, a used ball-point pen

**Assembly Tip:** Trace along the folds with a ruler and a used pen (no ink) to get a sharper, easier fold.

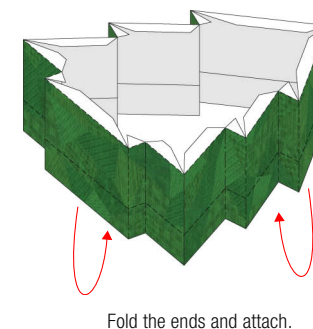
**[Caution]** Glue, scissors and other tools may be dangerous to young children, so be sure to keep them out of the reach of young children.

## How to make the lid.

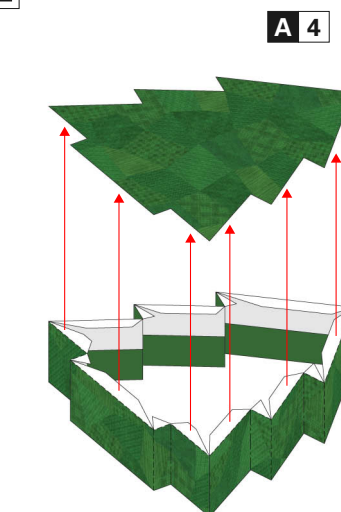
1



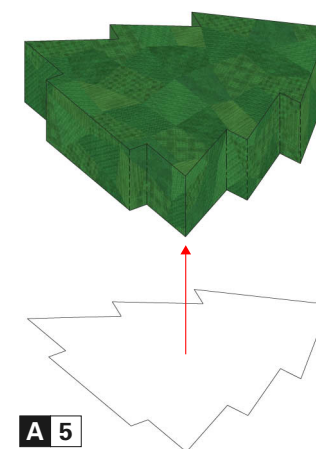
2



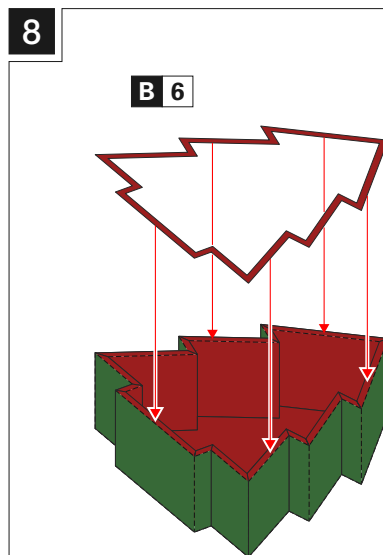
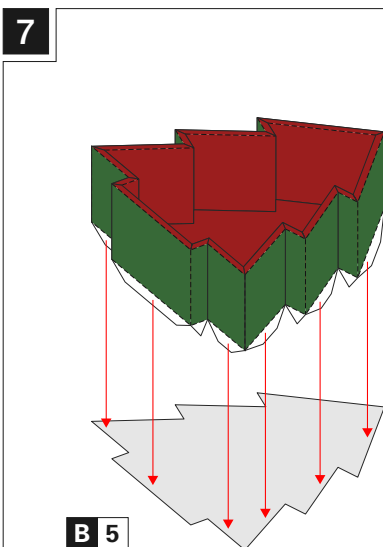
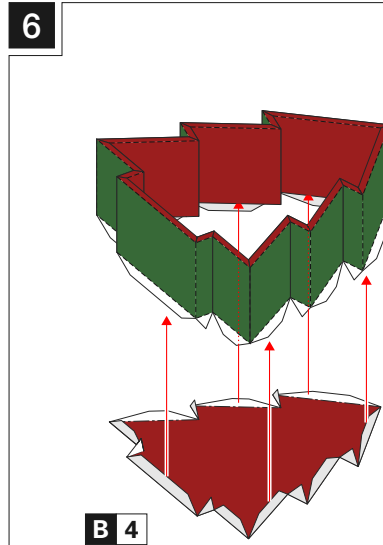
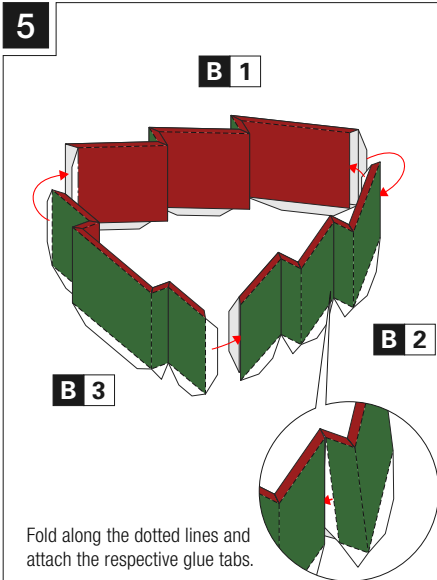
3



4



## How to make the box.



## Decorate it and you're done!

